

Solifiore: Protea

Assembly/Operating Instructions

KING[®]
L I V I N G

One person is required for safe assembly/operation.

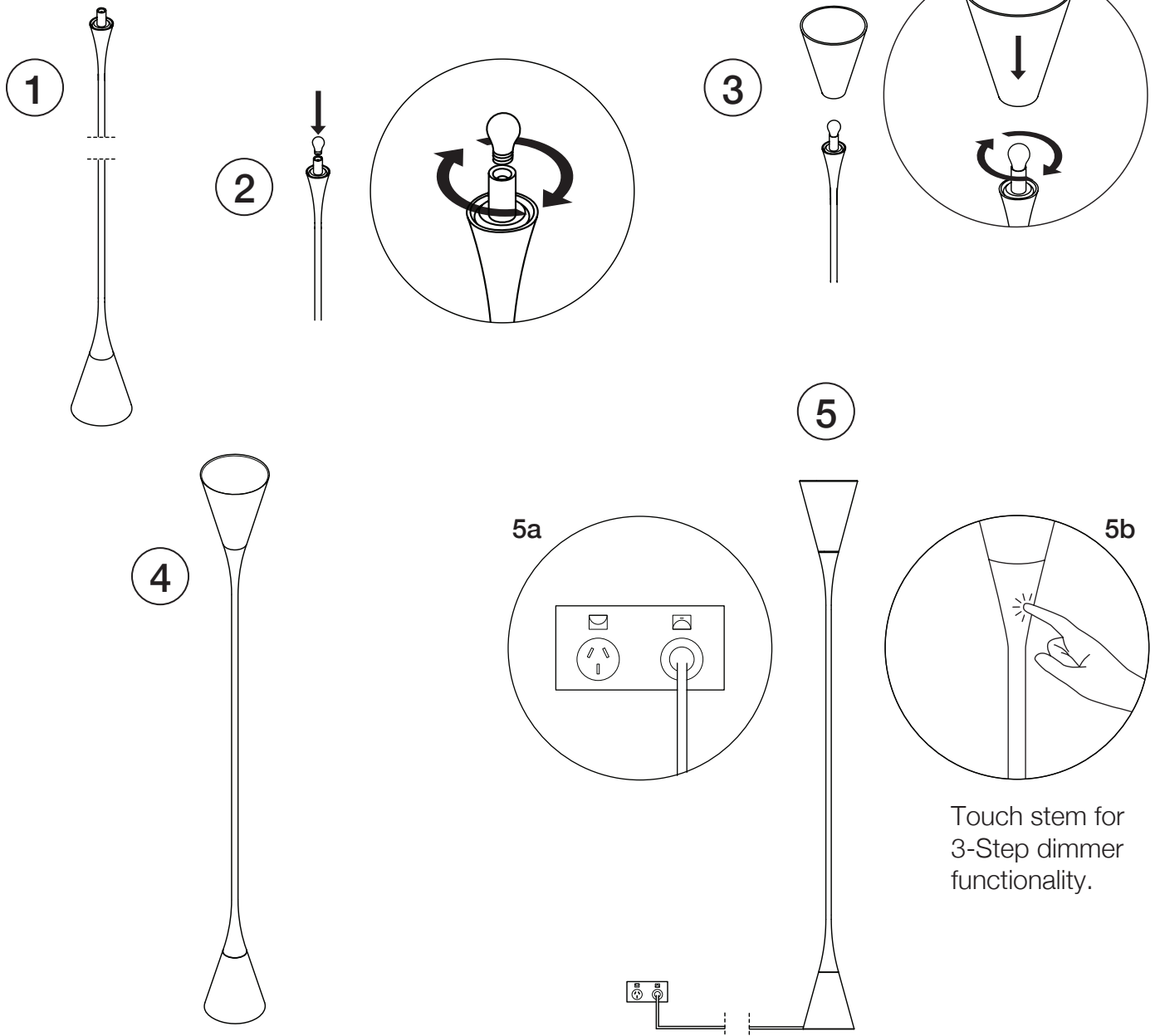
Opening Boxes

DO NOT use a knife to open the King Living boxes as you may damage your furniture. Peel off the tape, then lift & separate the cardboard flaps to open.

Assemble your furniture by following the steps below.

⚠ WARNING!

Do NOT change light bulbs while lamp is plugged into power source.



Specifications

GENERAL

Mounting: Floor

Environment: Indoor

Finishes:

Base: Honed Blackened Concrete

Stem: Black Nickel

Glass Shade: Hand Blown Glass

Weight: 6.0kg

Technical Description: Floor lamp providing warm controlled light through its touch dimming function. Base is honed blackened concrete with black nickel stem. Glass shades available in four colours.

Colours: Honed Blackened Concrete Base with Black Nickel Stem complete with coloured glass shade in either Amber, Ochre Red, Olive Green or Smoke.

Light Source: E14 40W Max.

[Recommended Colour Temperature – Warm White 3000K]

ELECTRICAL

Emergency: N/A

Switching: Touch dimming functionality

Voltage: 220–240V

Power: Max. 40W

Supply Included: N/A

Warning

WARNING

- The power supply must be switched off whenever installing and/or whenever acting on the appliance.
- The external flexible cable or cord of this luminaire cannot be replaced; if the cord is damaged, the luminaire shall be destroyed.
- Modification to this luminaire may compromise its safety and cause it to become dangerous. KING LIVING will void remaining warranty and declines all responsibility for products that are modified
- For controllable luminaire: lamps incorporated with dimmer circuit protected by reinforced insulation.
- Should the external trailing cable be damaged, cease use immediately and have an authorised representative of KING LIVING replace this component.
- NB: slowly screw in the diffuser taking care not to force or over tighten. Excessive tightening may cause difficulties or damage to; The diffuser and its associated components and/or difficulties removing the shade.

KING LIVING CUSTOMER CARE: kingliving.com/support